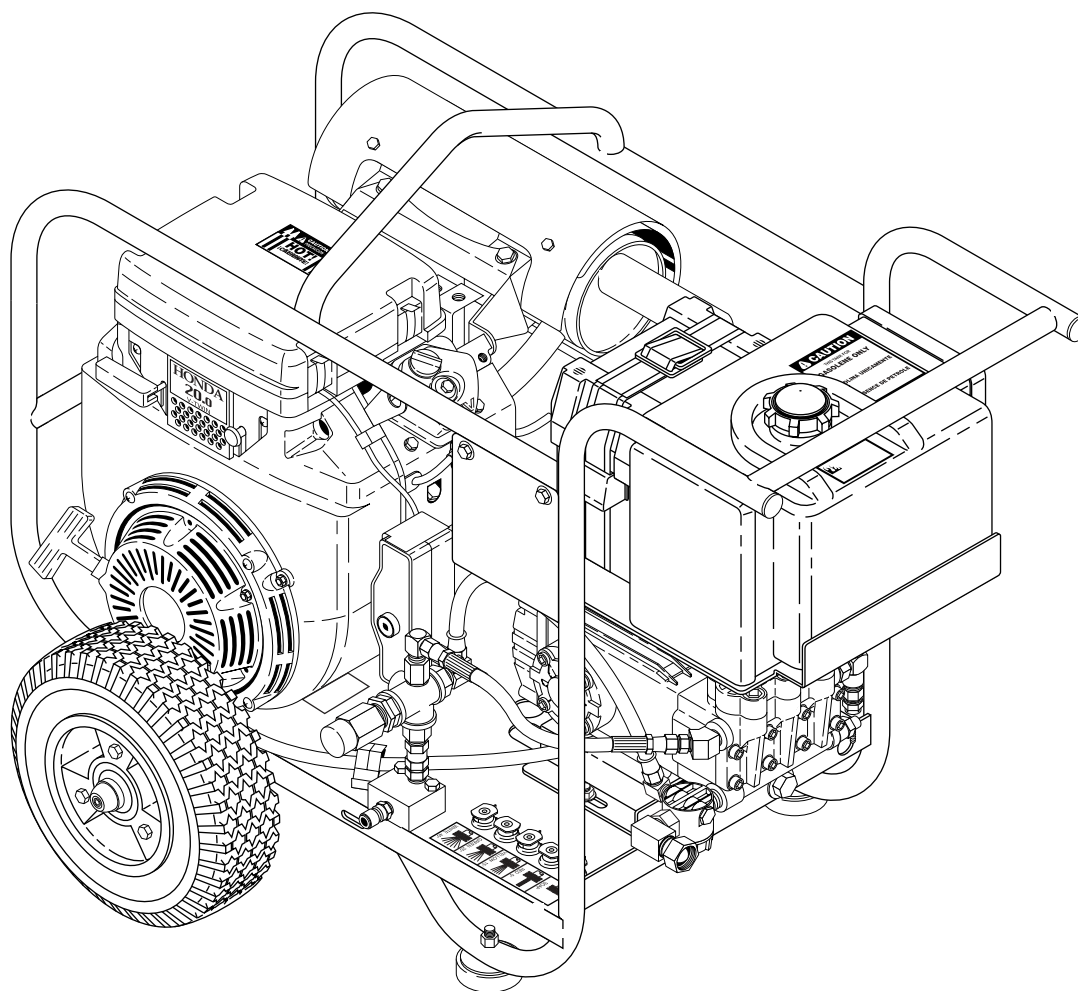




# MODEL: BR

## OPERATING INSTRUCTION AND PARTS MANUAL

- 
- |             |             |             |              |              |
|-------------|-------------|-------------|--------------|--------------|
| ■ BR-353031 | ■ BR-353037 | ■ BR-353531 | ■ BR-353537  | ■ BR-304031  |
| ■ BR-304037 | ■ BR-404021 | ■ BR-404027 | ■ BR-505031E | ■ BR-505037E |
- 



---

For technical assistance or the SHARK dealer nearest you, call 1-800-771-1881  
or visit our website at [www.shark-pw.com](http://www.shark-pw.com)

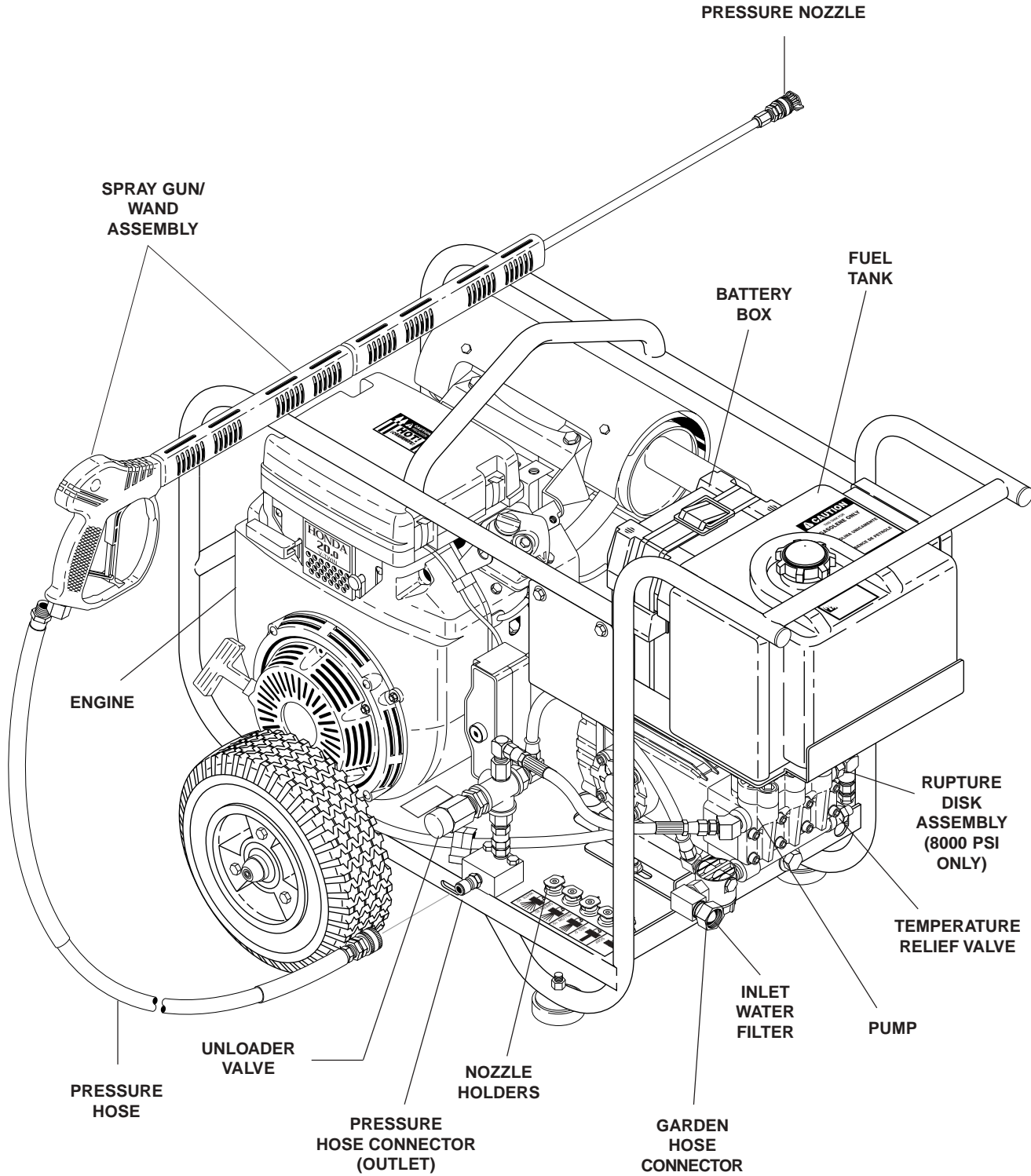


## CONTENTS

Component Identification .....	4	Storage .....	9
Introduction .....	5	Maintenance & Service .....	10
Important Safety Information .....	5-6	Troubleshooting Guide .....	11
Assembly Instructions .....	6-7	Machine Assembly & Parts List .....	12-15
Installation .....	7-8	Trigger Gun/Wand Assembly & Parts List .....	16-17
Operating Instructions .....	8-9	Pump Exploded Views & Parts Lists .....	18-20
Washing Procedures .....	9	Downstream Injector Assembly & Parts List .....	21
Shutdown Procedures .....	9	Warranty	

<b>SERIAL NUMBER:</b>
<b>DATE PURCHASED:</b>
<b>FOR SALES AND SERVICE, PLEASE CONTACT:</b>

**COMPONENT IDENTIFICATION**



## INTRODUCTION

Thank you for purchasing a Shark pressure washer.

This manual covers the operation and maintenance of the BR pressure washers. All information in this manual is based on the latest product information available at the time of printing.

Shark reserves the right to make changes at any time without incurring any obligation.

**The BR Series was designed for maximum use of 8 hours per day, 5 days per week.**

### Owner/User Responsibility:

The owner and/or user must have an understanding of the manufacturer's operating instructions and warnings before using this Shark pressure washer. Warning information should be emphasized and understood. If the operator is not fluent in English, the manufacturer's instructions and warnings shall be read to and discussed with the operator in the operator's native language by the purchaser/owner, making sure that the operator comprehends its contents.

Owner and/or user must study and maintain for future reference the manufacturers' instructions.

The operator must know how to stop the machine quickly and understand the operation of all controls. Never permit anyone to operate the engine without proper instructions.

**This manual should be considered a permanent part of the machine and should remain with it if machine is resold.**

**When ordering parts, please specify model and serial number.**

## IMPORTANT SAFETY INFORMATION



**CAUTION:** To reduce the risk of injury, read operating instructions carefully before using.

1. Read the owner's manual thoroughly. Failure to follow instructions could cause malfunction of the machine and result in death, serious bodily injury and/or property damage.
2. All installations must comply with local codes. Contact your electrician, plumber, utility company or the selling distributor for specific details.

3. This machine has been provided with Warning and Instruction decals for the safety of the operator. If these decals are removed or become damaged they should be replaced. Contact your dealer for replacement decals.



**CAUTION:** Risk of asphyxiation — Use this product only in a well ventilated area.

4. Avoid installing machines in small areas or near exhaust fans. Exhaust contains poisonous carbon monoxide gas; exposure may cause loss of consciousness and may lead to

death. It also contains chemicals known, in certain quantities, to cause cancer, birth defects or other reproductive harm.



**WARNING:** Flammable liquids can create fumes which can ignite causing property damage or severe injury.

**WARNING:** Risk of fire — Do not add fuel when the product is operating.

**WARNING:** Risk of explosion — Do not spray flammable liquids.

5. Do not place machine near flammable objects as the engine is hot.
6. Allow engine to cool for 2 minutes before refueling. If any fuel is spilled, make sure the area is dry before testing the spark plug or starting the engine. (Fire and/or explosion may occur if this is not done.)  
When refueling gasoline engines on mobile or portable equipment, make sure to refuel:
  - a. outdoors;
  - b. with the engine on the equipment stopped;
  - c. with no source of ignition within 10 feet of the dispensing point; and
  - d. with an allowance made for expansion of the fuel should the equipment be exposed to a higher ambient temperature.

In an overfilling or spillage situation, additional precautions are necessary to ensure that the situation is handled in a safe manner.



**WARNING:** High pressure stream of water that this equipment can produce can pierce skin and its underlying tissues, leading to serious injury and possible amputation.



**WARNING:** High pressure spray can cause paint chips or other particles to become airborne and fly at high speeds. To avoid personal injury, eye safety devices must be worn.

7. Protective clothing and foot protection must be worn when using this equipment.
8. High pressure developed by these machines will cause personal injury or equipment damage. Use caution when operating. Do not direct discharge stream at people, or severe injury or death will result.
9. Never make adjustments on machine while in operation.
10. Do not block or tie trigger gun in open position.
11. Do not place hands or feet on non-insulated areas of the pressure washer when starting gasoline engine.
12. When applying detergents, follow the safety rules on the detergent label.
13. Use detergent from a covered D.O.T. approved container.
14. Cleaning area should be provided with adequate slopes and drainage. This will reduce the possibility of a fall due to slippery surface.
15. The best insurance against an accident is precaution and knowledge of the machine.
16. Shark will not be liable for any changes made to our standard machines, or any components not purchased from Shark.
17. Read engine safety instructions provided.



**WARNING:** Keep water spray away from electrical wiring or fatal electric shock may result.

18. Never run pump dry or leave spray gun closed longer than 5 minutes.
19. Do not allow children to operate the pressure washer at any time.

20. Do not allow machine to run unattended.
21. Inlet water supply must be cold and clean fresh water.

**CAUTION:** Trigger gun kicks back – Hold with both hands.

**CAUTION:** Risk of injury – Disconnect battery ground terminal before servicing.

## ASSEMBLY INSTRUCTIONS

### Unpacking

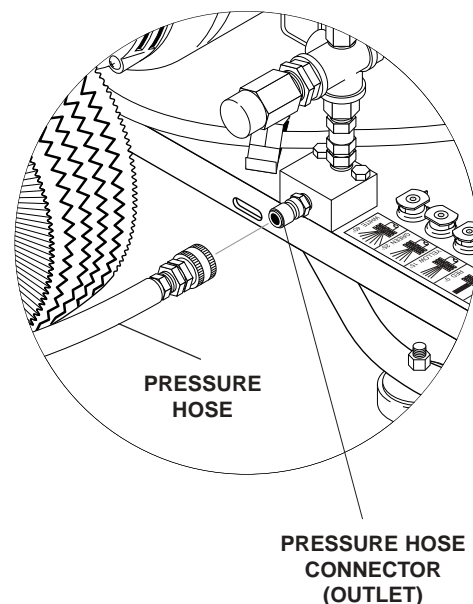
Unpack carefully. Wear safety glasses or goggles while unpacking, assembling, or operating pressure washer. If there are missing components or hidden damage, immediately contact carrier concerning discrepancies.

### Parts Included

- Pressure Washer
- Pressure Hose
- Wand
- Trigger Gun
- Operator's Manual
- Gasoline Engine Manual
- Pressure Nozzle (4 ea.)

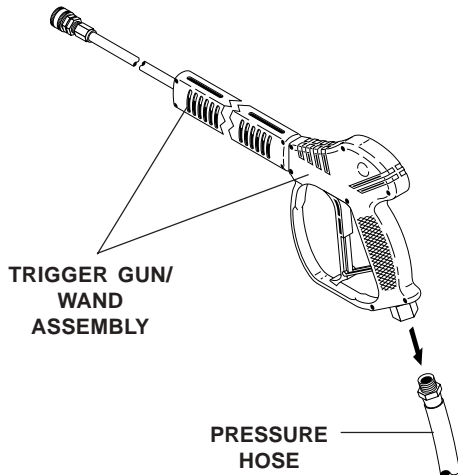
### Pressure Hose, Trigger Gun and Wand

1. Install the pressure hose on the pressure washer as shown in picture below.



2. Assemble wand components as shown in the picture below.

**NOTE:** The pressure nozzle is not to be installed at this time.



3. Make sure all plumbing connections are tight.

### Battery

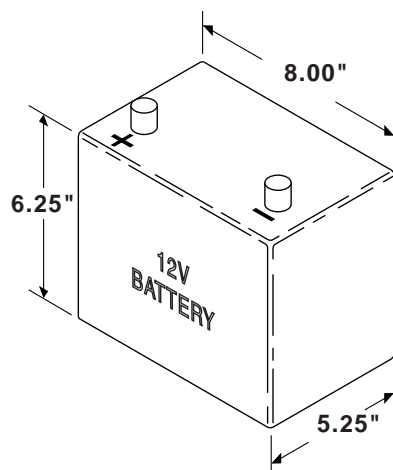
**WARNING:** Wear eye, hand and skin protection when handling or connecting battery.

**WARNING:** Batteries generate explosive gases during normal battery operation. DO NOT expose the battery to flame or sparks as these gases may ignite.

**WARNING:** Battery fluid is highly acidic. If battery fluid contacts skin or clothing, wash immediately with soap and water. If battery fluid enters eye, immediately flood eye with running cold water for at least 15 minutes and get immediate medical attention.

**NOTE:** The battery must be capable of accepting ring terminals.

1. Place battery in battery box (battery not included). Use a group U1, 12 volt, 30 amp hour battery (garden tractor battery). Select a battery similar to the one in the picture below for proper fit and installation.



2. To reduce the possibility of sparking attach the battery cables in the following order. First attach the positive battery cable (red) to the positive "+" terminal of battery. Next, attach the negative battery cable (black) to the negative "-" terminal of the battery. To disconnect the battery remove the cables in the opposite order as installed. Install battery box cover and fasten in place.

## INSTALLATION

### Getting Started

**IMPORTANT:** Proper initial installation of equipment will assure more satisfactory performance, longer service life, and lower maintenance cost.

**IMPORTANT:** The use of a backflow preventer on the water supply hose is recommended and may be required by local codes.

The pressure washer should be run on a level surface where it is not readily influenced by outside sources such as strong winds, freezing temperatures, rain, etc. The pressure washer should be located to assure easy access for filling of fluids, adjustments and maintenance. Normal precautions should be taken by the operator to prevent moisture from reaching the pressure washer.

It is recommended that a partition be made between the wash area and the pressure washer to prevent direct spray from the wand coming in contact with the pressure washer. Moisture reaching this equipment will reduce the pressure washer's life. All installations should comply with local codes covering such installations.

### Venting

**DANGER:** Do not run machine indoors or in an enclosed area, as engine exhaust fumes may be hazardous to your health.

**DANGER:** Do not operate machine in areas where flammable vapors (gasoline, solvents, etc.) may be present, as this machine may ignite the vapors.

**CAUTION:** All venting must be in accordance with applicable federal and state laws, and local ordinances. Consult local contractors.

If the pressure washer is to be used in an enclosed area, a flue must be installed to vent engine exhaust to the outside atmosphere. When selecting the location for operation, beware of poorly ventilated locations or areas where exhaust fans may cause an insufficient supply of oxygen. Proper combustion can only be obtained when there is a sufficient supply of oxygen available for the amount of fuel being burned. If it is necessary to use the



machine in a poorly ventilated area, outside fresh air may have to be piped to the engine and a fan installed to bring sufficient air into the machine.

In addition, the pressure washer should never be operated in an enclosed area where high ambient temperatures exist. High ambient temperatures (above 100° F) can cause engine oil failure and will greatly reduce the engine's performance.

### Gasoline Engine

This gasoline engine is preset for operation at altitudes below 3000 feet above sea level. If operated at higher altitudes, it may be necessary to install a high altitude main jet in the carburetor. Contact an authorized engine sales and service center for details. It may become necessary to lower PSI to compensate for high altitudes.

## OPERATING INSTRUCTIONS

### Before Starting

1. Read all manuals provided with this pressure washer. Become familiar with location and function of all operating and safety controls.

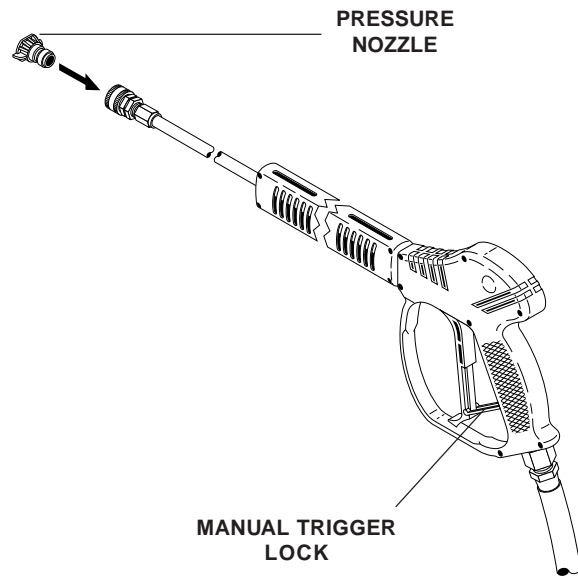
**CAUTION:** Check hoses, fittings, wand, and trigger gun daily for signs of wear, cracks and looseness, and replace as required.

2. Connect water supply hose to the garden hose connector located on the pump. The water faucet and supply hose must be capable of providing a minimum of 5.0 gallons per minute (GPM).
3. Fill the engine fuel tank. Do not overfill, fill to the bottom of filler neck only. Use lead free gasoline minimum 85 octane. **DO NOT** use gasoline containing methanol. Refer to the provided **gasoline engine manual** for additional details.
4. Check pump and engine oil levels.

**IMPORTANT:** Before installing pressure nozzle on initial start-up, turn on the water supply and allow water to run from the end of the wand until clear to prevent the nozzle from clogging.

**IMPORTANT:** If the pressure washer has not been used for an extended period of time, remove the pressure nozzle from the end of the wand and turn on water supply. Allow water to run from the end of the wand until clear.

5. Install the proper pressure nozzle for your cleaning needs on end of wand, refer to the picture below.



**IMPORTANT:** The trigger gun provided with this pressure washer is equipped with a manual trigger lock to prevent accidental operation of the trigger gun. The trigger lock should be used whenever the trigger gun is not in use.

### To Start

**IMPORTANT:** The water must be turned on before starting. Running the pump dry will cause damage and void warranty.

**IMPORTANT:** Do not allow the machine to run with trigger of the trigger gun released for more than 10 minutes at any one time or damage to pump may occur.

1. Turn ON water supply.
2. Hold wand firmly, release trigger of trigger gun.
3. Turn fuel shutoff valve to ON position (if so equipped). Move choke lever to full choke position (choke may not be needed on warm engine). Move throttle lever to full throttle position.
4. Turn key on engine clockwise, hold until engine starts. **DO NOT** crank engine for longer than 15 seconds at any one time or starter damage may occur.
5. When the engine starts, move choke lever until engine runs smoothly. When engine warms, move choke lever to no choke position.



**NOTE:** If the battery charge is too low to start the engine, the manual rope start may be used. Set the engine controls the same as for the key start.

**NOTE:** If engine fails to start, refer to *Troubleshooting Guide* in this manual.

6. Squeeze trigger of trigger gun and allow air and pressure to purge from system.

## WASHING PROCEDURES

**DANGER:** Do not place hands or fingers in front of high pressure spray. Bodily injury may result.



1. Wash from the bottom to the top, using side to side motions.
2. Do not wash at a 90° angle to work (straight at it). This allows water to splash back at you and reduces your cleaning power. Wash at a 30° to 60° angle to the work. This will allow the water to splash away from you and the water will wash the dirt away faster and easier.
3. Use the full width of the spray pattern to wash in a wide path. Overlap spray paths for complete coverage. Wash from side to side, using slow, steady motions.
4. The nozzle should be 12" to 24" from work, closer for tough areas. Be careful on painted or delicate surfaces, the pressure may damage surface if nozzle is too close.
5. Small parts should be washed in a basket and larger, lightweight parts should be clamped down so the pressure does not push them away.

## SHUTDOWN PROCEDURES

1. Move throttle lever to idle position.
2. Turn engine ON/OFF switch to the OFF position.

**IMPORTANT:** Do not use choke lever to stop engine as damage to engine may occur.

3. Turn fuel shutoff valve to OFF position (if so equipped).
4. Turn water supply OFF.
5. Squeeze trigger of trigger gun to relieve system pressure.

## STORAGE



**DANGER:** Do not store flammable liquids (gasoline, diesel fuel, solvents, etc.) near pressure washer, or in non-ventilated areas.

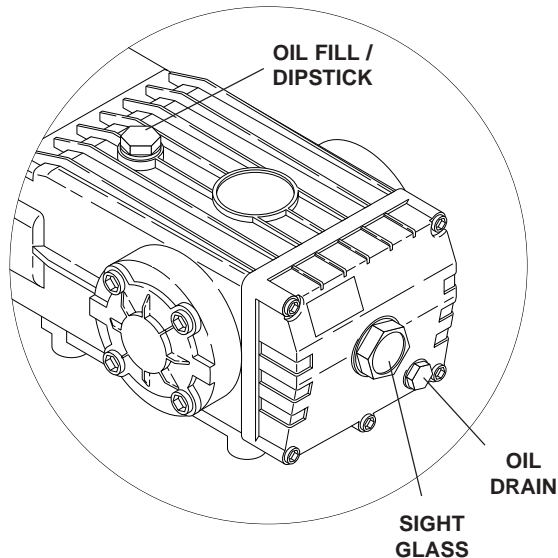
1. Protect from freezing by storing in a heated area, or by flushing the system with antifreeze (use an automotive engine antifreeze or windshield washer solvent to antifreeze). To flush the system with antifreeze, attach a short length of hose to the garden hose connector located on the pump. Place the other end of the hose into a container of antifreeze. Start machine and allow to run until antifreeze flows from the end of the wand. Squeeze and release the trigger of the trigger gun several times to antifreeze the unloader system. If the pressure washer is not to be used for an extended length of time, it is recommended that the system be flushed with antifreeze for rust protection. Refer to provided **gasoline engine manual** for engine storage information.

## MAINTENANCE

**WARNING:** *Unauthorized machine modification or use of non-approved replacement parts may cause personal injury and/or property damage and will void the manufacturer warranty.*

### Pump

**Lubrication:** To lubricate pump, use 30W non-detergent oil for pump crankcase. Crankcase must be filled to center of sight glass window found on the side of the pump; refer to the picture below. During the break-in-period, make sure the oil is changed after the first 25 hours of operation. After that, replace oil every 3 months or 300 hours, whichever comes first.



### Proper Pump Care:

- **DO NOT** pump acids.
- **DO NOT** allow pump to run dry.
- Winterize if storing in freezing temperatures. Refer to **Storage** for details.
- Use a water softener on the water system if known to be high in mineral content.
- Flush the pressure washer system with antifreeze if storing for an extended period of time. Refer to **Storage** for details.

### Gasoline Engine

Refer to the provided **gasoline engine manual** for recommended maintenance.

### Battery

Refer to **battery manufacturer's literature** for recommended maintenance.

### Unloader Valve

**CAUTION:** *The unloader valve on this pressure washer has been factory set and sealed and is a field nonadjustable part. Tampering with the factory setting may cause personal injury and/or property damage, and will void the manufacturer warranty. For replacement refer to pages 18, 19 and 20.*

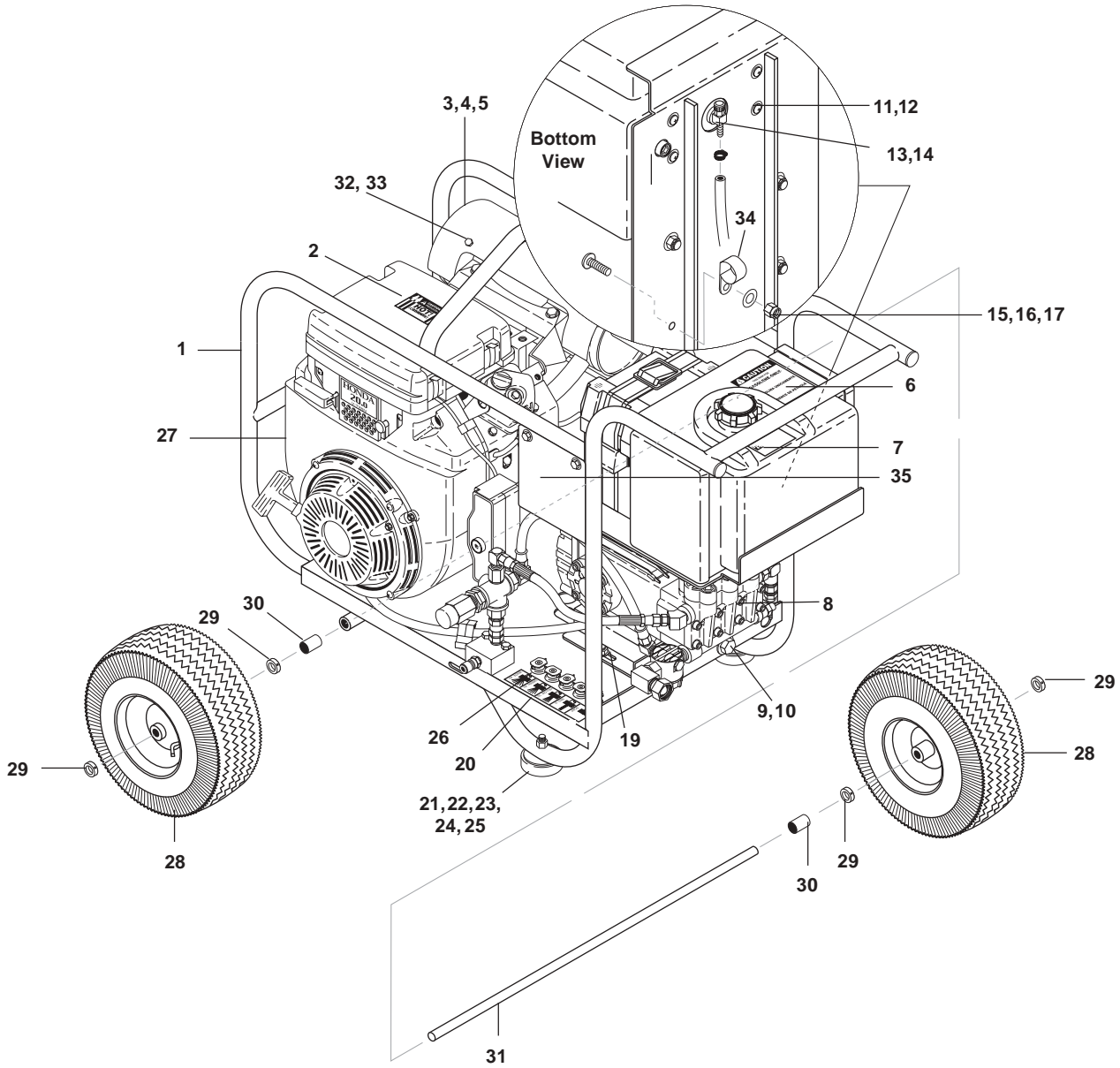
### Relief Valve (Rupture Disk)

**CAUTION:** *The relief valve on this pressure washer has been factory set and sealed and is a field nonadjustable part. Tampering with the factory setting may cause personal injury and/or property damage, and will void the manufacturer warranty.*

## TROUBLESHOOTING GUIDE

SYMPTOM	POSSIBLE CAUSES	CORRECTIVE ACTION
Gas engine will not run.	Out of gas.	Replenish supply. Use only recommended fuels. Refer to <b>Before Starting</b> under <b>Operation</b> .
	Fuel valve closed (if so equipped).	Open valve.
	Loose spark plug wire.	Reconnect.
	Choke or throttle set incorrectly.	Refer to <b>To Start</b> under <b>Operation</b> .
	Engine ON/OFF switch in OFF position.	Place engine ON/OFF switch in ON position.
	Low engine oil level.	Replenish supply. Engine will not start or run if oil is low (on engines equipped with low oil protection).
<b>Refer to provided gasoline engine manual for additional troubleshooting.</b>		
Pressure washer runs but won't spray.	Trigger of trigger gun released.	Squeeze trigger.
	Water supply not turned on.	Open water supply valve.
	Clogged pressure nozzle.	Clean pressure nozzle opening.
Low spray pressure at pressure nozzle.	Inadequate water supply.	Fully open faucet. Check for kinked or damaged hose. Use 5/8 inch minimum hose. Check for debris clogging inlet screen.
	Partially clogged or damaged pressure nozzle.	Clean or replace.
	Engine throttle not in full throttle position.	Place engine throttle in full throttle position.
Uneven spray pattern.	Partially clogged or damaged pressure nozzle.	Clean or replace.

**MACHINE ASSEMBLY**  
**SIDE VIEW**

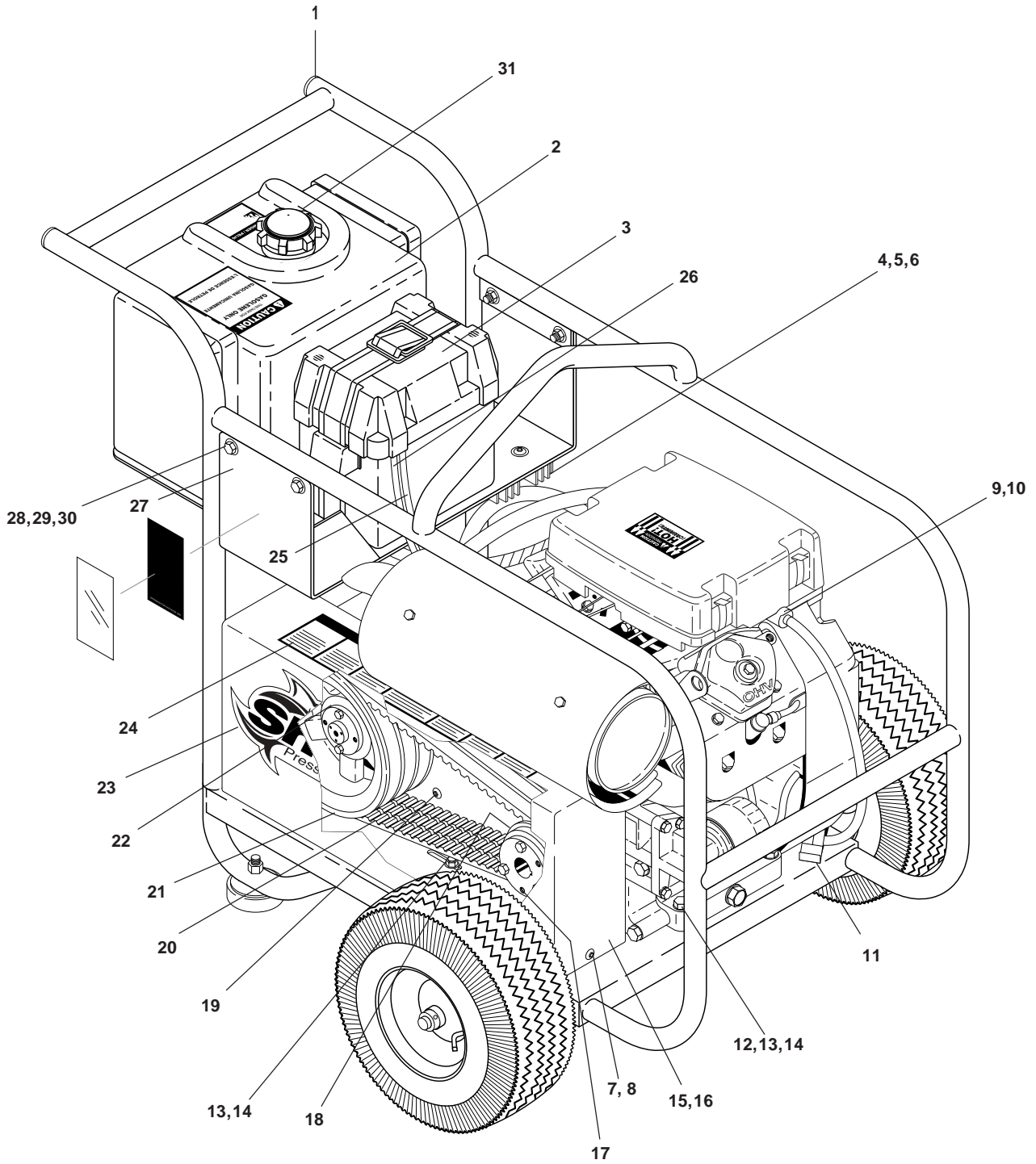


## MACHINE ASSEMBLY SIDE VIEW PARTS LIST

ITEM	PART NO.	DESCRIPTION	QTY.	ITEM	PART NO.	DESCRIPTION	QTY.
1	95-07104020	Frame, Welded Cage Assy 16/20/24 HP (4040, 5050)	1	16	90-4001	Washer, 5/16", Flat, SAE	4
	95-07104003	Frame, Welded Cage Assy 11/13 HP (3040, 3530, 3535)	1	17	90-2001	Nut, 5/16" ESNA, NC	4
2	10-02025A	Label, "Hot/Caliente" Warning	1	18	2-00471	▲ Plug, 1/8" Square Head, Black	1
3	77-VHLM4	Muffler, Honda GX620 20 & 24 HP (5050)	1	19	95-07104037	Slider, Pump/Guard Legacy (353037, 353537, 304037)	1
	76-807964	Muffler, Briggs 16 HP (4040)	1		95-07104035	Slider, Pump/Guard General (353031, 353531, 304031)	1
4	7-01434	Insulation, Muffler Guard (5050)	1		95-07104039	Slider, Pump/Guard Legacy (404027, 505037)	1
5	95-07104029	Shield, Heat, Muffler Guard, Honda 20/24 HP (5050)	1		95-07104023	Slider, Pump/Guard General (404021, 505031)	1
	95-07101214	Shield, Heat, Muffler Guard, Vanguard 16 HP (4040)	1	20	11-3218	Label, Nozzle	1
6	10-02011	Label, Gasoline Only	1	21	2-01041	Pad, Soft Rubber, 50 Duro	2
7	10-02029	Label, Danger Cool Engine	1	22	90-1021	Bolt, 3/8" x 2-1/2", NC HH	2
8	5-1660	Pump, Legacy TT-3540 (353037, 353537)	1	23	90-40125	Washer, 3/8" x 1" Steel	2
	5-1665	Pump, Legacy KT-4040 (304037, 404027)	1	24	90-4002	Washer, 3/8", Flat, SAE	2
	5-1668	Pump, Legacy HDL-5050 (505037)	1	25	90-2002	Nut, 3/8" ESNA, NC	2
	5-23040	Pump, General, TS-1011 (353031, 353531)	1	26	2-0103	Grommet, Rubber, Nozzle Holder	5
	5-2320	Pump, General, T-9281 (304031, 404021)	1	27	5-0105	Engine, Honda, 11 HP (3530)	1
	5-2331	Pump, General, T-5050 (505031)	1		5-010721	Engine, Honda, 13 HP (3040, 3535)	1
9	90-102751	Bolt, 1/2" x 3-1/2", NC HH (3530, 3535, 3040)	1		5-0306	Engine, Vanguard 16 HP Pull Start (4040)	1
	90-102746	Bolt, 1/2" x 5", Tap (4040, 5050)	1		5-01094	Engine, Honda 24 HP E/S (5050)	1
10	90-3096	Washer, 1/2", Flat	1	28	4-0302	Wheel & Tire Compl. 6" Mag	2
11	90-18012	Screw, 1/4" x 5/8", PHIC PH MS	4	29	90-20041	Collar, 5/8"	4
12	90-4011	Washer, 5/16", Star, External	4	30	90-40181	Washer, Nylon Spacer, 0.656"	2
13	7-80320	Shut Off Valve, Fuel Tank	1		90-40181	Washer, Nylon (4050)	1
14	2-010061	Grommet, Fuel Tank	1	31	95-07104723	Axle, 5/8" x 27.80"L	1
15	90-100543	Screw, 5/16"-18 x 3/4" MPH TRH	4	32	90-19925	Screw, M6 x 20mm, BH, SOC, Blk	4
				33	90-40001	Washer, 1/4", Flat, SAE, Black	4
				34	2-9016	▲ Clamp, Round, 0.56" ID	1
				35	11-0316	Label, Instructions	1

▲ Not Shown

**MACHINE ASSEMBLY**  
**SIDE VIEW**

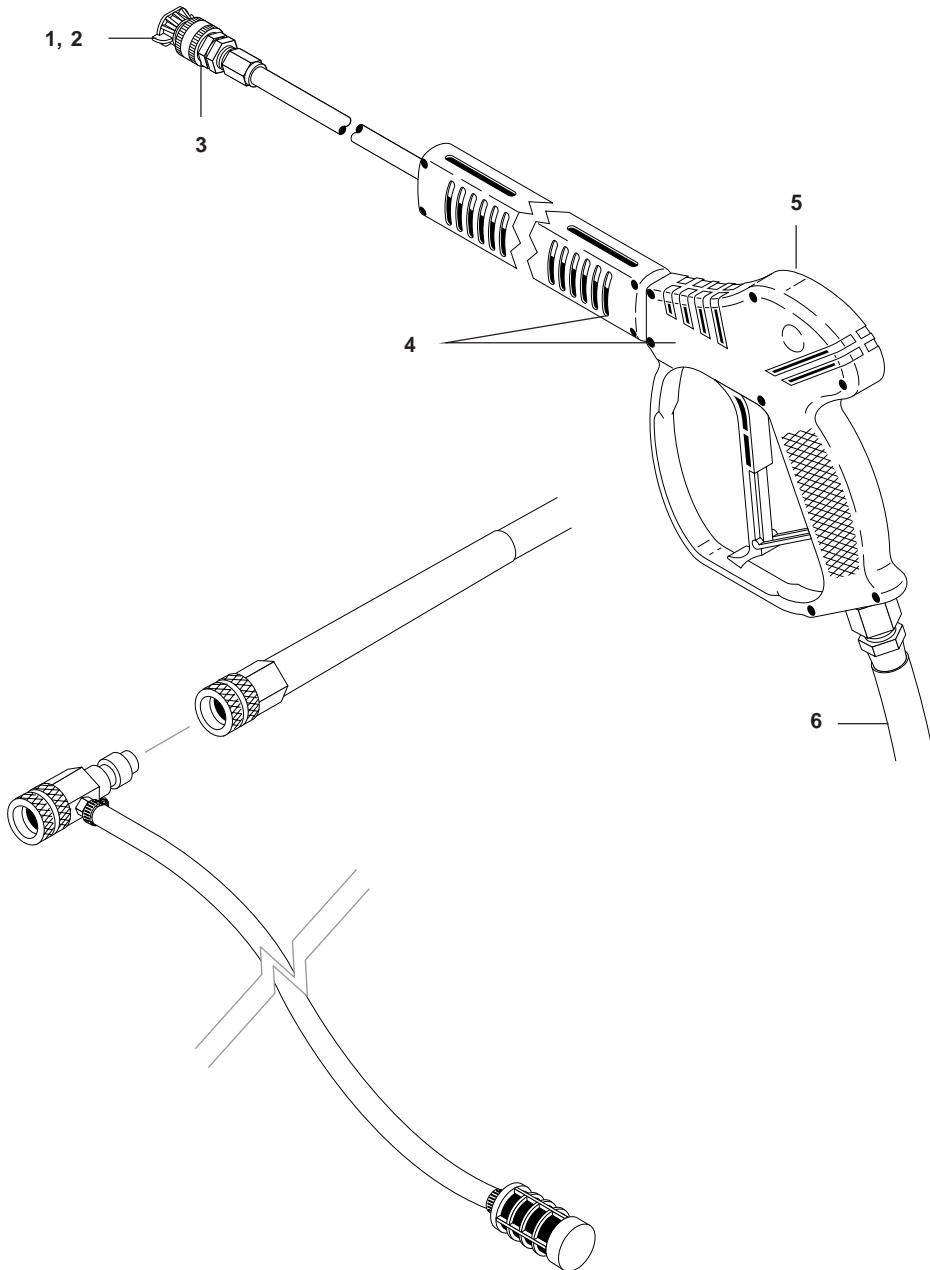




## MACHINE ASSEMBLY SIDE VIEW PARTS LIST

ITEM	PART NO.	DESCRIPTION	QTY.	ITEM	PART NO.	DESCRIPTION	QTY.
1	2-01443	Plug, Plastic, 1-1/4"	2	19	90-1995	Screw, 1/4" x 1/2", BH SOC CC (Large Frame)	2
2	2-011507	Tank, Encore, 5 Gal. Fuel (5050)	1	20	5-604042	Belt, BX42 (505037)	3
3	2-0117	Battery Box (5050)	1		5-604042	Belt, BX42 (404027)	2
	2-011700	▲ Plate, Battery Box, Small (5050)	1		5-604041	Belt, BX41 (505031)	3
4	77-31620-ZG5-003	Rectifier 18 Amp (5050)	1		5-602037	Belt, AX37 (304031, 353031, 353037, 353531, 353537)	2
5	90-19980	Screw, 1/4" x 1" BH SOC CS (5050)	2		5-602038	Belt, AX38 (304037)	2
6	90-2000	Nut, 1/4" ESNA, NC (5050)	2		5-604040	Belt, BX40 (404021)	2
7	90-1995	Screw, 1/4" x 1/2", BH, SOC, Blk (Large Frame)	5	21	5-40207401	Pulley, 2AK 74H ((304031, 353031, 353037, 353531, 353537)	1
8	90-40001	Washer, 1/4", Flat, SAE, Black	5		5-40208401	Pulley, 2AK 84H (304037)	1
9	2-9040	Clamp, Hose, UNI .46 - .54 ST	2		5-40507001	Pulley, 2BK 70H (404021)	1
10	4-02100000	Hose, 1/4", Push-On, Fuel Line	4.75 ft		5-40508001	Pulley, 2BK 80H (404027)	1
11	2-90151	Clamp, Snap-in Wire	2		5-41007001	Pulley, 3BK 70H (505031)	1
12	90-1010	Bolt, 5/16" x 1-3/4", NC HH	4		5-41008001	Pulley, 3BK 80H (505037)	1
13	90-4001	Washer, 5/16", Flat, SAE	8	22	5-512024	Bushing, H x 24MM (353031, 353037, 353531, 353537, 304031, 404021, 505031)	1
14	90-2001	Nut, 5/16" ESNA, NC	4		5-512026	Bushing, H x 30MM (304037, 404027, 505037)	1
15	95-07104027	Guard, Belt, Front Steel (4040, 5050)	1	23	11-013	Shark Logo Large, Red/Blue/White	1
	2-0117200	Belt Guard, Plastic (3040, 3530, 3535)	1	24	11-0101	Label, Warning, Pictorial (4040, 5050)	1
16	95-07104028	Guard, Belt, Rear Steel (404021, 505031)	1		11-01011	Label, Warning (3040, 3530, 3535)	1
	95-07104036	Guard, Belt, Rear, SQ (404027, 505037)	1	25	6-05109	Cable, Battery, 32" Red (5050)	1
17	5-511100	Bushing, H x 1" (3040, 3530, 3535, 4040)	1	26	6-051092	Cable, Battery, 36" Black (5050)	1
	5-531113	Bushing, P2 x 1-1/8" (505031, 505037)	1	27	95-071040261	Weldment, BRKT, Battery, Red (5050)	1
18	5-407034	Pulley, 3TB34 (505037)	1	28	90-1007	Bolt, 5/16" x 1" NC HH (5050)	4
	5-407036	Pulley, 3TB36 (505031)	1	29	90-4001	Washer, 5/16", Flat, SAE (5050)	8
	5-40203001	Pulley 2AK 30H (353031, 353037, 304031, 304037)	1	30	90-2001	Nut, 5/16" ESNA, NC (5050)	4
	5-40203201	Pulley 2AK 32H (353531, 353537)	1	31	2-01167	Cap, Fuel Tank, Plastic (5050)	1
	5-40503601	Pulley, 2BK 36H (404027)	1			▲ Not Shown	
	5-40504001	Pulley, 2BK 40H (404021)	1				

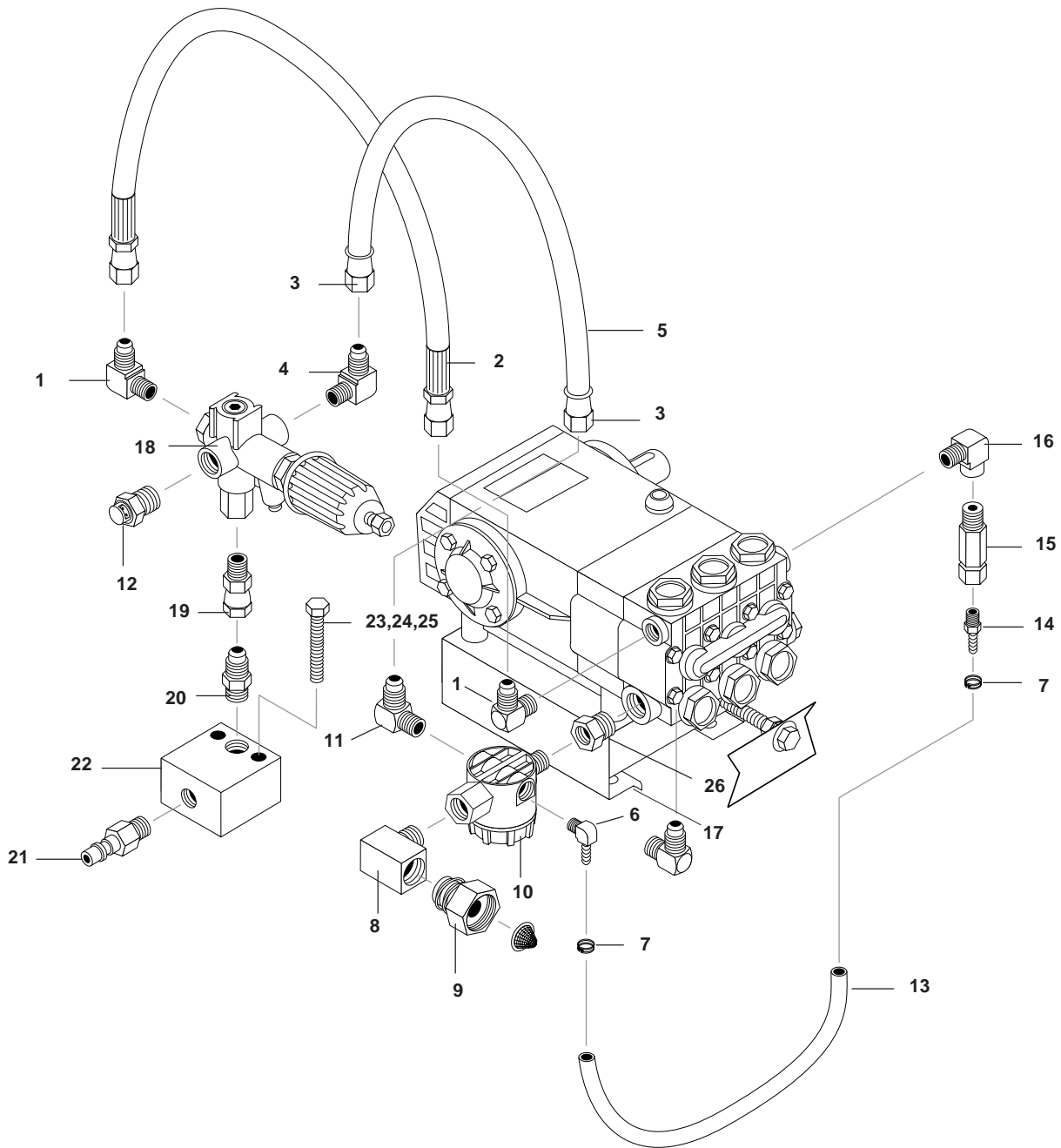
**TRIGGER GUN/WAND ASSEMBLY**



## TRIGGER GUN/WAND ASSEMBLY PARTS LIST

ITEM	PART NO.	DESCRIPTION	QTY.	ITEM	PART NO.	DESCRIPTION	QTY.
1	4-16540	Nozzle, Compl. 6540, Black	1	2	4-12804540	Nozzle, SAQCMEG 40045, White (505031, 505037)	1
2	4-12803000	Nozzle, SAQCMEG 0003, Red (304031, 304037)	1	3	2-2001	Coupler, 1/4" Male, Brass	1
	4-12803015	Nozzle, SAQCMEG 1503, Yellow (304031, 304037)	1	4	4-012192	Spray Gun w/Wand, 5000PSI w/Coupler (505037, 505031)	1
	4-12803025	Nozzle, SAQCMEG 2503, Green (304031, 304037)	1		4-0110410	▲ Wand, Straight, 31.4" w/ Coupler (353037, 353031, 353537, 353531, 304037, 304031, 404027, 404021)	1
	4-12803040	Nozzle, SAQCMEG 4003 White (304031, 304037)	1	5	4-01246	Spray Gun, Shut-Off AP-1000 (353037, 353031, 353537, 353531, 304037, 304031, 404027, 404021)	1
	4-12804000	Nozzle, SAQCMEG 0004, Red (353031, 353037, 353531, 353537, 404021, 404027)	1	6	4-02093450BC	Hose, 3/8" x 50', 2 Wire Red w/Coupler (353037, 353031)	1
	4-12804015	Nozzle, SAQCMEG 1504 Yellow (353031, 353037, 353531, 353537, 404021, 404027)	1		4-02043450F	Hose, 3/8" x 50', 2 Wire, 5800 PSI w/5000 PSI CPL (505037, 505031)	1
	4-12804025	Nozzle, SAQCMEG 2504 Green (353031, 353037, 353531, 353537, 404021, 404027)	1		4-02073450RC	Hose, 3/8" x 50', 2 Wire Blue, 4500 PSI W/Coupler (304031, 304037, 404021, 404027, 353531, 353537)	1
	4-12804040	Nozzle, SAQCMEG 4004 White (353031, 353037, 353531, 353537, 404021, 404027)	1			▲ Not Shown	
	4-12804500	Nozzle, SAQCMEG 0004.5, Red (505031, 505037)	1				
	4-12804515	Nozzle, SAQCMEG 15045 Yellow (505031, 505037)	1				
	4-12804525	Nozzle, SAQCMEG 25045, Green (505031, 505037)	1				

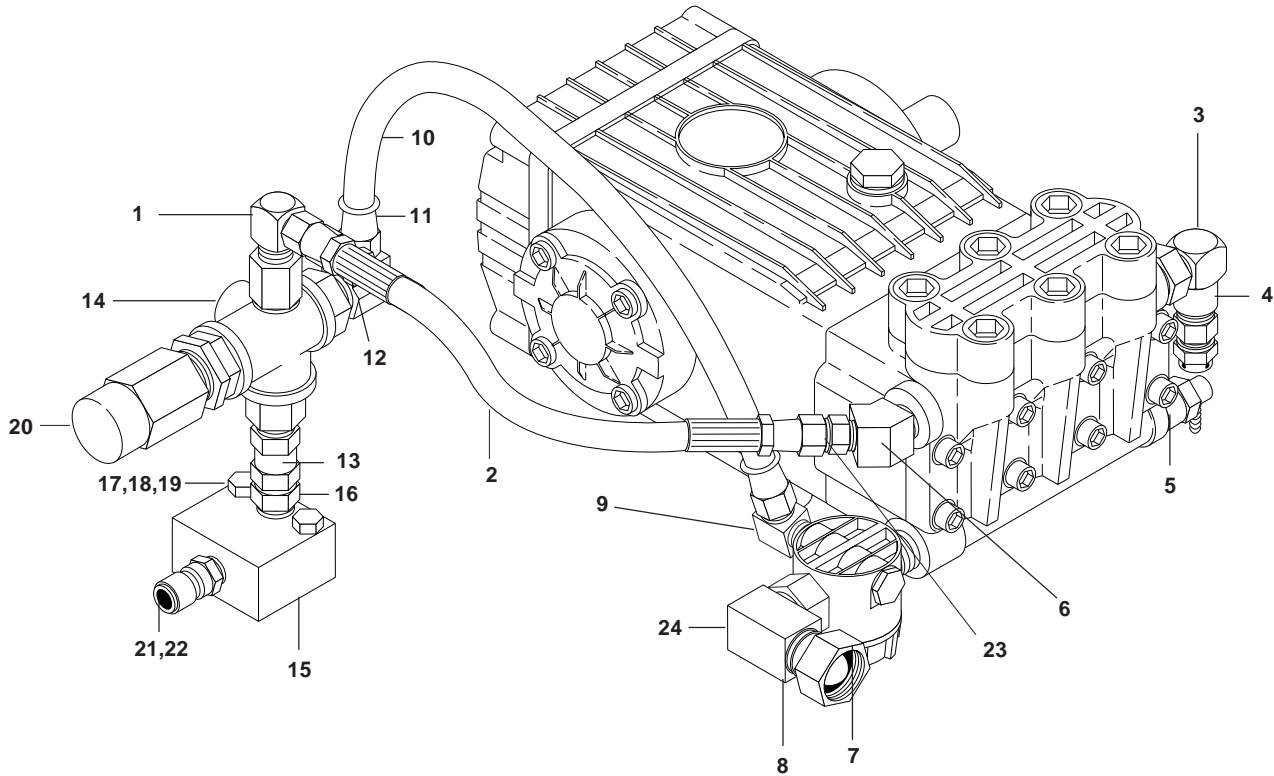
**PUMP ASSEMBLY**  
3530, 3535, 3040, 4040



**PUMP ASSEMBLY****PARTS LIST****3530, 3535, 3040, 4040**

ITEM	PART NO.	DESCRIPTION	QTY.	ITEM	PART NO.	DESCRIPTION	QTY.
1	2-0053	Elbow, 1/2" JIC, 3/8", 90°	2	16	2-0031	Elbow, 3/8" Street	1
2	4-02047720	Hose, 3/8" x 20", 2 Wire Pressure Loop	1	17	95-07104037	Slider, Pump/Guard, Legacy (353037, 353537, 304037)	1
3	2-1105	Swivel, 1/2" JIC Fem, Push-On	2		95-07104035	Slider, Pump/Guard, General (353031, 353531, 304031)	1
4	2-1060	Elbow, 1/2" JIC x 3/8", 90°	1	18	5-3207	Unloader, AL-VRT 606 (353031, 353037, 353531, 353537)	1
5	4-02110000	Hose, 1/2", Push-On	1.25 ft		5-3208	Unloader, AL-VRT 607 (304031, 304037, 404021, 404027)	1
6	2-1089	Hose Barb, 1/4" Barb x 1/4" Pipe, 90°	1	19	2-0079	Swivel, 1/2" JIC Fem x 3/8" Male	1
7	2-9040	Clamp, Hose, UNI .46 - .54	2	20	2-0051	Nipple, 1/2" JIC x 3/8" Pipe	1
8	2-1024	Elbow, 1/2" Street, Brass	1	21	2-2007	Nipple, 3/8" x 3/8" NPT ST Male (3040, 3530, 3535, 4040)	1
9	2-10942	Swivel, 1/2" MP x 3/4" GHF w/Strainer	1	22	95-07101216/B	Block, Unloader, 3/8" x 3/8" Brass	1
10	2-1908	Strainer, 1/2" General, Inline	1	23	90-1010	Bolt, 5/16" x 1-3/4", NC HH	2
11	2-1061	Elbow, 1/2" JIC x 1/4", 90°	1	24	90-4001	Washer, 5/16", SAE, Flat	2
12	2-300816	Pump Protector (353031, 304031)	1	25	90-20012	Nut, 5/16", Whiz, NC	2
13	4-02100000	Hose, 1/4", Push-On, Fuel	1 ft.	26	2-1081	Bushing, 3/4" x 1/2" (All Legacy Pumps)	1
14	2-1084	Hose Barb, 1/4" Barb x 1/8", Male	1				
15	2-3100544	Valve, E-Z Start, 3/8" MPT x 1/8" FPT	1				

**PUMP ASSEMBLY**  
**5050E**



ITEM	PART NO.	DESCRIPTION	QTY.
1	2-00601	Elbow, 1/2" JIC x 3/8" Fem. 90°	1
2	4-02047709	Hose, 3/8" x 8-5/8", 2 Wire Pressure Loop	1
3	2-00271	Elbow, Street, 3/8" x 1/2" Steel	1
4	2-3408	Disk, Rupture Assy, 8000 PSI	1
5	2-30082	Pump Protector, 1/2" PTP	1
6	2-00575	Elbow, 3/8" Steel, Street, 45°	1
7	2-1908	Strainer, 1/2" Inline	1
8	2-10942	Swivel, 1/2" MP x 3/4" GHF w/Strainer	1
9	2-1061	Elbow, 1/2" JIC x 1/4", 90°	1
10	4-02110000	Hose, 1/2" Push-On	1.25 ft
11	2-1105	Swivel, 1/2" JIC Fem, Push-On	2
12	2-1062	Elbow 1/2" JIC x 1/2" Pipe	1
13	2-0079	Swivel, 1/2" JIC Female, 3/8" Male	1

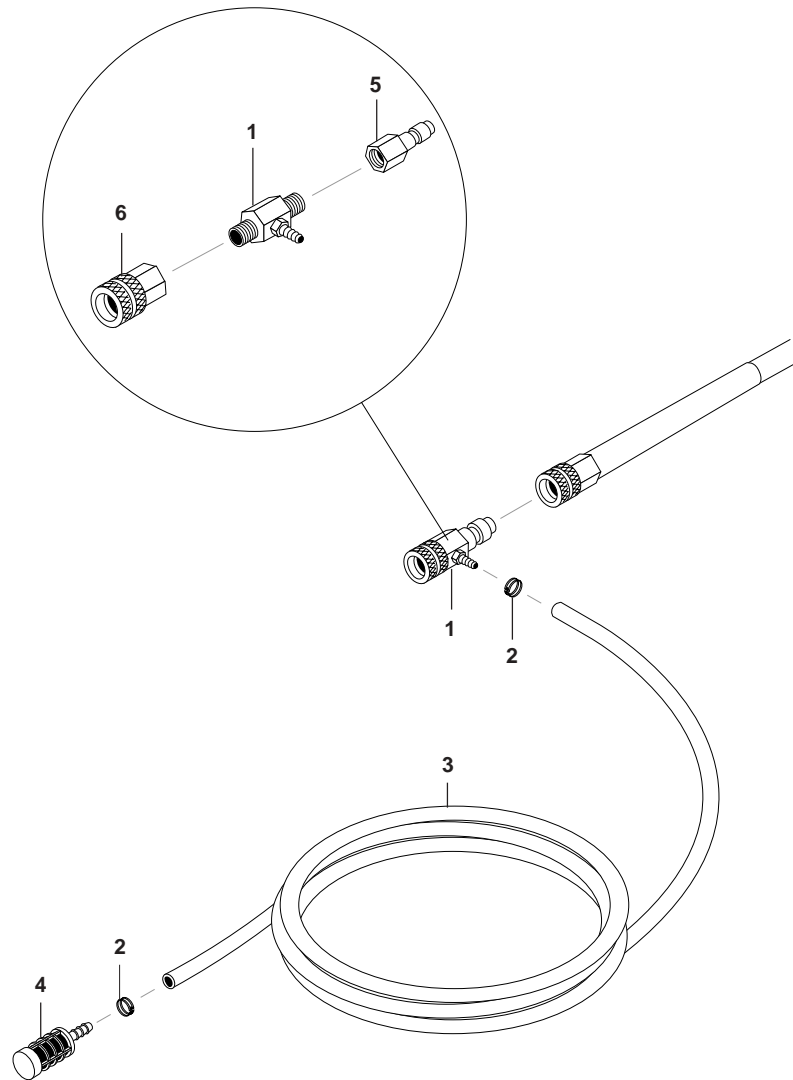
ITEM	PART NO.	DESCRIPTION	QTY.
14	2-1046	Plug, 1/4" Countersunk	1
15	95-07101216B	Unloader Block, 3/8" x 3/8"	1
16	2-0051	Nipple, 1/2" JIC x 3/8" Pipe	1
17	90-1020	Bolt, 3/8" x 2", TAP	2
18	90-4002	Washer, 3/8", Flat, SAE	2
19	90-2002	Nut, 3/8" ESNA	2
20	5-3014	Unloader, General, VB-350/4	1
21	2-0006	Nipple, 3/8" x 3/8" ST Male	1
22	2-20022	Nipple, 3/8" Fem, 5000 PSI	1
23	2-0051	Nipple, 1/2" JIC x 3/8"	1
24	2-1024	Elbow, 1/2" Street, Brass	1
25	95-07104039	▲ Slider, Pump/Guard, Legacy (505037E)	1
	95-07104023	▲ Slider, Pump/Guard, General (505031E)	1
		▲ Not Shown	



## DOWNSTREAM INJECTOR ASSEMBLY

4-011184 (3040, 3530, 3535, 4040)

4-011186 (5050)



ITEM	PART NO.	DESCRIPTION	QTY.
1	3-12021	Detergent Injector Non-Adjust (3040, 3530, 3535, 4040)	1
	3-1208	Detergent Injector (No Coupler) 5000 PSI (5050)	1
2	2-9040	Clamp, Hose, UNI .46 - .54	2
3	4-02080000	Tube, 1/4" x 1/2", Clear Vinyl	6ft.

ITEM	PART NO.	DESCRIPTION	QTY.
4	2-1904	Strainer, 1/4" Hose Barb	1
5	2-20022	Nipple 3/8" Female 5000 PSI (4-011186)	1
6	2-20021	Coupler, 3/8" Fem. 5000 PSI (4-011186)	1



# BR PRESSURE WASHER WARRANTY

## SHARK LIMITED NEW PRODUCT WARRANTY PRESSURE WASHERS

### WHAT THIS WARRANTY COVERS

All SHARK PRESSURE WASHERS are warranted by SHARK to the original purchaser to be free from defects in materials and workmanship under normal use, for the periods specified below. This Limited Warranty is subject to the exclusions shown below, is calculated from the date of the original purchase, and applies to the original components only. Any parts replaced under this warranty will assume the remainder of the part's warranty period. This warranty applies to the original purchaser and is not transferable.

### LIMITED LIFETIME PARTS WARRANTY:

Components manufactured by SHARK, such as frames, handles, coil wraps, float tanks, and belt guards. Forged brass pump manifold. All heating coils will have a one year warranty. Internal components on the oil-end of all pressure washer pumps will have a seven year warranty.

### ONE YEAR PARTS WARRANTY:

All other components, excluding normal wear items as described below, will be warranted for one year on parts. Warranty on these parts will be for one year regardless of the duration of the original component manufacturer's part warranty.

### WARRANTY PROVIDED BY OTHER MANUFACTURERS:

Motors, generators, and engines, which are warranted by their respective manufacturers, are serviced through these manufacturers' local authorized service centers. SHARK cannot provide warranty on these items.

### WHAT THIS WARRANTY DOES NOT COVER

This warranty does not cover the following items:

1. Normal wear items, such as nozzles, guns, discharge hoses, wands, quick couplers, seals, filters, gaskets, O-rings, packings, pistons, pump valve assemblies, strainers, belts, brushes, rupture disks, fuses, pump protectors.
2. Damage or malfunctions resulting from accidents, abuse, modifications, alterations, incorrect installation, improper servicing, failure to follow manufacturer's maintenance instructions, or use of the equipment beyond its stated usage specifications as contained in the operator's manual.
3. Damage due to freezing, chemical deterioration, scale buildup, rust, corrosion, or thermal expansion.
4. Damage to components from fluctuations in electrical or water supply.
5. Normal maintenance service, including adjustments, fuel system cleaning, and clearing of obstructions.
6. Transportation to service center, shop labor charges, field labor charges, or freight damage.

### WHAT YOU MUST DO TO OBTAIN WARRANTY SERVICE

While not required for warranty service, we request that you register your SHARK pressure washer by returning the completed registration card. In order to obtain warranty service on items, you must return the product to an Authorized SHARK Dealer, freight prepaid, with proof of purchase, within the applicable warranty period. If the product is permanently installed, you must notify your Authorized SHARK Dealer of the defect. The Authorized Dealer will file a claim, which must subsequently verify the defect. In most cases, the part must be returned to SHARK freight prepaid with the claim. For warranty service on components warranted by other manufacturers, the Authorized Dealer can help you obtain warranty service through these manufacturers' local authorized service centers.

### LIMITATION OF LIABILITY

SHARK'S liability for special, incidental, or consequential damages is expressly disclaimed. In no event shall SHARK'S liability exceed the purchase price of the product in question. SHARK makes every effort to ensure that all illustrations and specifications are correct, however, these do not imply a warranty that the product is merchantable or fit for a particular purpose, or that the product will actually conform to the illustrations and specifications. **THE WARRANTY CONTAINED HEREIN IS IN LIEU OF ALL OTHER WARRANTIES, EXPRESS OR IMPLIED, INCLUDING ANY IMPLIED WARRANTY OF FITNESS FOR A PARTICULAR PURPOSE.** SHARK does not authorize any other party, including authorized Dealers, to make any representation or promise on behalf of SHARK, or to modify the terms, conditions, or limitations in any way. It is the buyer's responsibility to ensure that the installation and use of SHARK products conforms to local codes. While SHARK attempts to assure that its products meet national codes, it cannot be responsible for how the customer chooses to use or install the product.

### SHARK PRESSURE WASHERS

1-360-833-9100 • 1-800-771-1881 • [www.shark-pw.com](http://www.shark-pw.com)





Form #97-6139 • Revised 12/03 • Printed in U.S.A.